



**STRAWCTURE** ECO

EMPOWERING SUSTAINABLE CONSTRUCTION





**STRAWCTURE ECO**

EMPOWERING SUSTAINABLE CONSTRUCTION





Strawcture Eco's journey has taught me a lot of things , most importantly living with uncertainty and channeling optimism to deal with what the next day has to offer. The idea was conceptualized in a village while I was preparing to finish my rural fellowship. I learnt up close how the issue of climate change is one of the most pressing issues in most conferences and forums while its consequences are faced the most by people who are not part of the debate. The solution is to move towards Circular Economy . Every industry needs to use Circular concepts as early as the design & product development stage if we as a tribe wish to address climate change. My experience, qualification landed me at a junction to address Circularity in the Build sector. The Build Sector contributes 28% to Global GHGs emission and by 2050 , 50% of that emission will be in the form of Embodied carbon in all our buildings. Our vision is to reduce the global build sector embodied carbon by 25% in the next 10 years. It's an audacious goal . We are hopeful that with a resilient business model, sustainable value chain we can get there.





**Waste is  
only waste  
if you  
waste it**

## OUR VISION

We aim to spark a paradigm change in how we design and live. We use Natural, renewable fiber as an alternative to cement, wood fiber and other carbon intensive material for all our furniture and interior needs.

**A new, sustainable  
way of living**





## OUR PRODUCT

---

Our agri-based BioPanels are made out of highly compressed straw and are extremely strong, durable and resilient to extreme conditions. With cutting edge research in agri-fiber compression and a state-of-the art manufacturing setup, we offer the best eco-friendly and sustainable product for all your construction and furniture requirements





Carbon Negative



Fire Resistant  
> 2hrs



Formaldehyde Free  
E1 GRADE



Moisture Resistant



Termite Proof



Acoustic Insulation  
40dB



UV Resistant



<b>11</b> SUSTAINABLE CITIES AND COMMUNITIES 	<b>12</b> RESPONSIBLE CONSUMPTION AND PRODUCTION 	<b>13</b> CLIMATE ACTION 
--	--	------------------------------





# BIO PANEL

LIGHT-WEIGHT | GREAT  
AESTHETICS | SMOOTH,  
RAW TEXTURE

5 YEARS  
WARRANTY





# BIO PANEL HD

HIGH DENSITY PANELS  
FOR HEAVY DUTY  
APPLICATIONS

8 YEARS  
WARRANTY





**10 YEARS  
WARRANTY**

# **BIO PANEL PREMIUM**

EXTERIOR GRADE, WEATHER  
RESISTANT PANELS





**A thickness  
for every  
application**

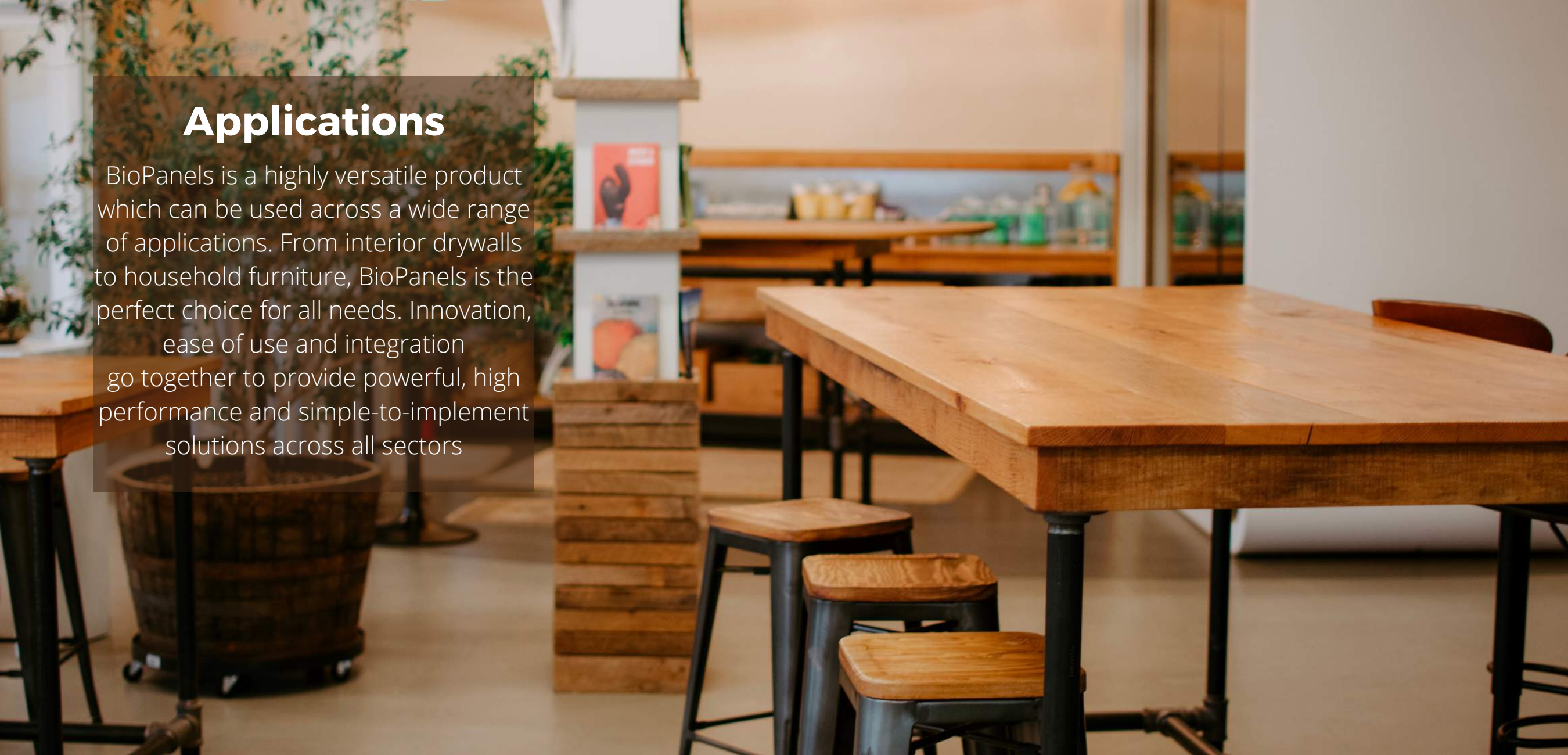
**THICKNESS (mm)**

**9 12 18 25 30 35**



# Applications

BioPanels is a highly versatile product which can be used across a wide range of applications. From interior drywalls to household furniture, BioPanels is the perfect choice for all needs. Innovation, ease of use and integration go together to provide powerful, high performance and simple-to-implement solutions across all sectors







**STRAWCT-WALLS**

# DRYWALL

**EXTERNAL & INTERNAL PARTITIONS**

It is best suited to the modern trend of fast-track construction schedules as it's lighter, easy to handle, and eliminates 'drying time' associated with brick and mortar construction. Ideal for non-load bearing walls, Drywall controls cost while maintaining the highest quality standards and aids better coordination between all construction activities.





## **SPEED OF INSTALLATION**

4x faster than masonry construction

## **DRY CONSTRUCTION**

Clean and dust free work environment

## **EXCELLENT PERFORMANCE**

2 HR+ Fire rating, 40dB+ Acoustic Insulation  
Termite Proof, Moisture resistant

## **DESIGN OPTIMIZATION**

Versatile layouts possible, supports appliance loads, easy hole-cutting for electrical wiring





## AESTHETIC APPEAL

Smooth, seamless surfaces  
that complement all  
kinds of finishing

## DURABLE

- Long-lasting
- 10 year warranty
- ReUsable

## LIGHT WEIGHT

10x lighter than  
conventional walls





# FINE FINISH

*BioPanels allow ease of finishing by being extremely compatible with tiles, wallpapers, veneers, laminates, paints etc. With so many options, achieve the desired look and feel for your walls*





# FRAMING

## CHANNELS

MS FRAMING USED FOR | THICKNESS :

WIDTH :

GI FRAMING USED FOR | THICKNESS :

WIDTH :

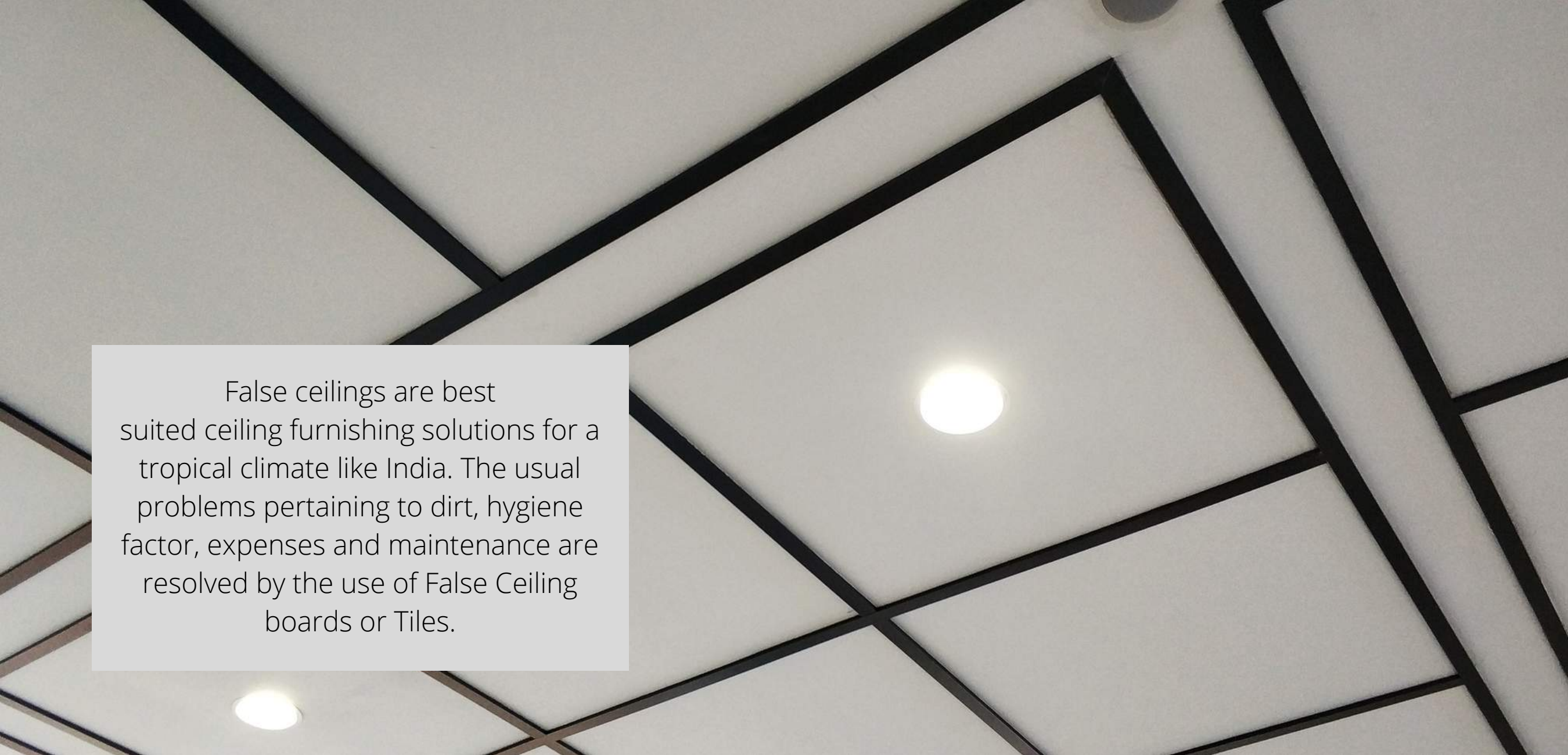


# CEILING

GRID & CONCEALED





The background image shows a false ceiling with a grid of dark lines forming squares. Two circular recessed lights are visible, one in the center-right and one in the bottom-left. A white text box is overlaid on the left side of the image.

False ceilings are best suited ceiling furnishing solutions for a tropical climate like India. The usual problems pertaining to dirt, hygiene factor, expenses and maintenance are resolved by the use of False Ceiling boards or Tiles.



# **ACOUSTIC INSULATION**

Soundproof ceilings to keep the unwanted noise out and achieve high audio control

# **EASY TO HANDLE**

Light weight panels, easy to lift and fix on frames

# **FIRE RETARDANT**

More than 2 hours of fire rating which retards spread of fire in case of emergency

# **MOISTURE PROOF**

Solution to seepage and mold problems prevalent in false ceilings with other materials



A photograph of a modern, curved ceiling with recessed lighting and a decorative groove. The ceiling is white and features several circular recessed lights. A large, curved groove is cut into the ceiling, creating a sense of depth and movement. The lighting is warm and ambient, highlighting the smooth curves of the ceiling. The overall aesthetic is clean, minimalist, and sophisticated.

# *Stylish Curves and Grooves*

For higher end design projects, our complement of specialty ceiling options will help even your most complex designs become a reality





# FRAMING

## CHANNELS

MS FRAMING USED FOR | THICKNESS :

WIDTH :

GI FRAMING USED FOR | THICKNESS :

WIDTH :





# FLOORING

Mezzanine Solutions







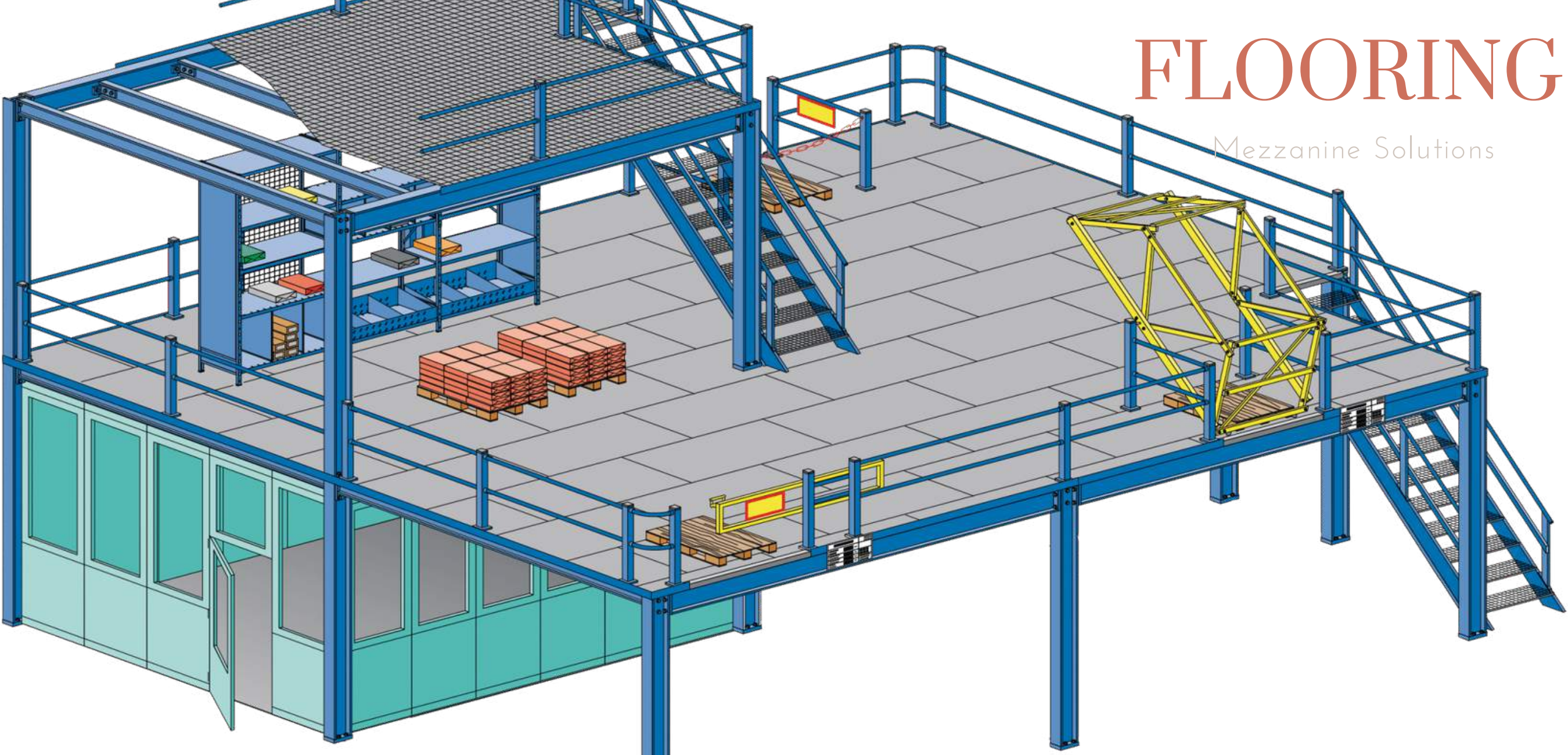
# FLOORING

Mezzanine Solutions

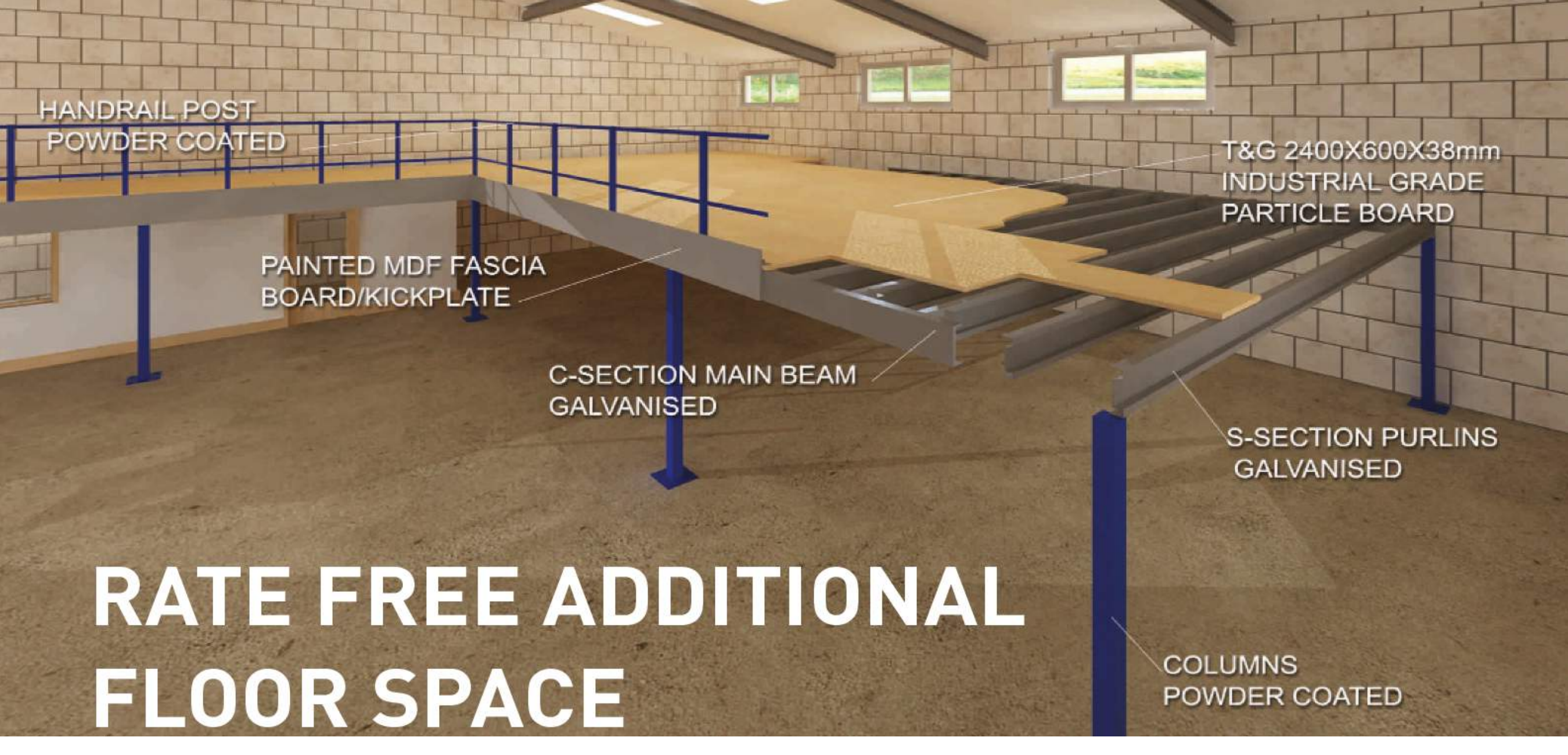


# FLOORING

Mezzanine Solutions







HANDRAIL POST  
POWDER COATED

PAINTED MDF FASCIA  
BOARD/KICKPLATE

C-SECTION MAIN BEAM  
GALVANISED

T&G 2400X600X38mm  
INDUSTRIAL GRADE  
PARTICLE BOARD

S-SECTION PURLINS  
GALVANISED

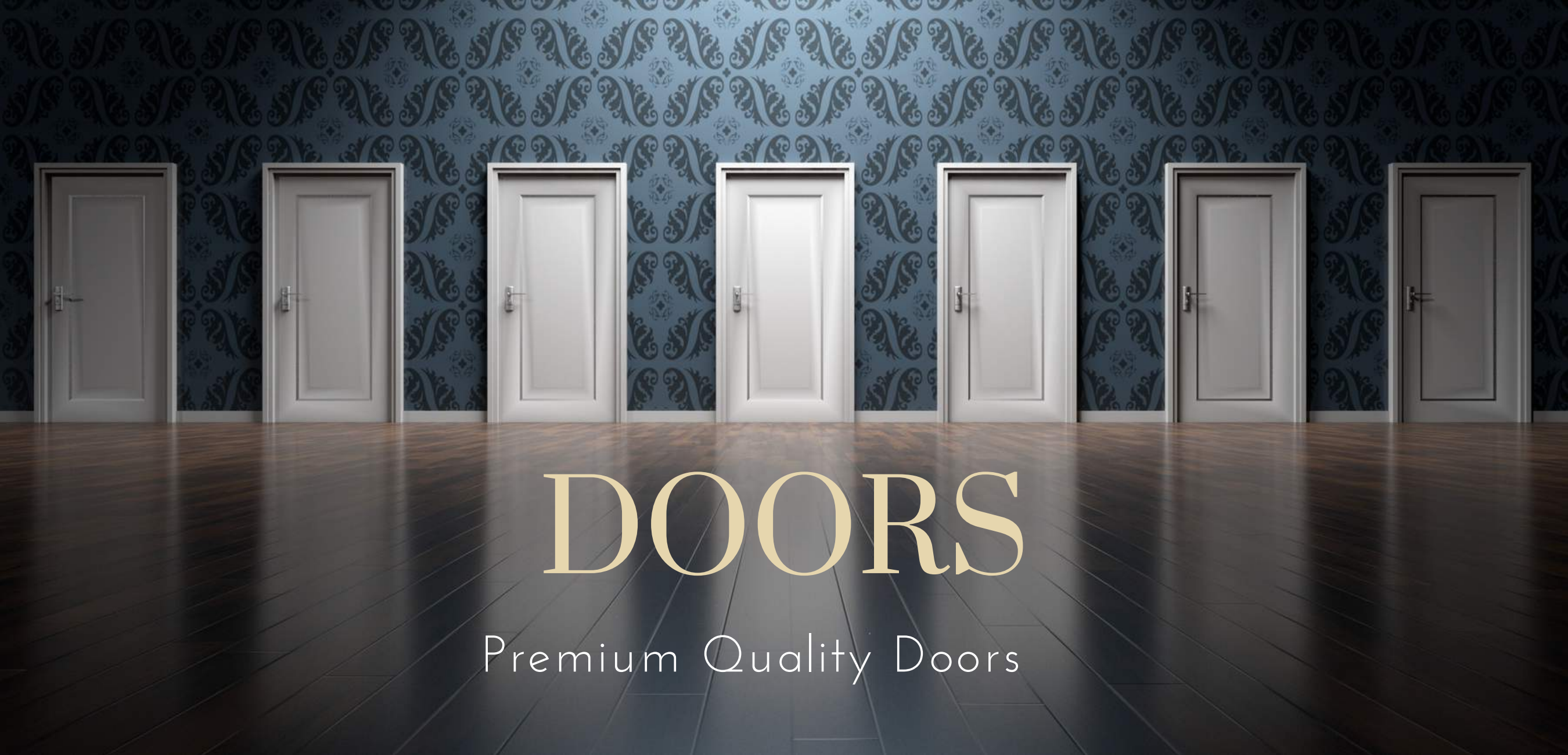
COLUMNS  
POWDER COATED

**RATE FREE ADDITIONAL  
FLOOR SPACE**









# DOORS

Premium Quality Doors



# ECODOOR +

Strawcture Eco is offering for the first time a Door made of 30 mm of Sustainable BioPanel and 5 mm of Reclaimed wood  
The final door is a class in itself, exclusive offering only by Strawcture Eco in India

It is Sustainable , ISI Approved, 2Hr + Fire retardant

## Finishes

- Texture/ Laminate/ Veneer/ 3D Design/ Paint/ Reclaimed Wood
- Grade : HD, Premium
- Thickness : 30 mm, 35mm , 50 mm ( any other on request)





# STRAWCTURE ECO

---

Furniture Forever





A close-up photograph of a wooden chair's backrest. The chair is made of light-colored wood with several horizontal slats. A single screw is visible, securing one of the slats to the vertical backrest post. A circular callout on the left side of the image points to this screw. The background is dark and out of focus, showing some draped fabric.

## High Screw Holding Capacity

Screws and nails are easy to drive into the boards and once set, they remain unaffected by movements and disturbances, being firmly lodged in its surrounding groove.



## Durability

On account of stellar laminar strength and high-pressure compression, our panels have a very high durability.





A photograph of a bedroom interior. On the left, a round bedside table with a white marble top holds a modern lamp with a copper-colored base and a white globe, a white ceramic vase with dried greenery, and a piece of bleached skull. To the right is a bed with a dark wood headboard and white linens. A white callout circle on the left contains text, with a white line and a small white circle pointing to the wood headboard.

## Homogeneous material

Due to a uniform composition, any curves, CNC cut designs and other creative manoeuvres can be easily crafted on our boards. So when it comes to creativity, with our Panels, the sky is the limit.



# OH SO EASY!

**BIGGER SIZE**

LOW WASTAGE >> HIGHER LABOUR PRODUCTIVITY  
LESSER NO. OF JOINTS >> BETTER AESTHETICS

6'

10'

**SIZES  
AVAILABLE**

8'

\*CUSTOM SIZES  
OFFERED TOO

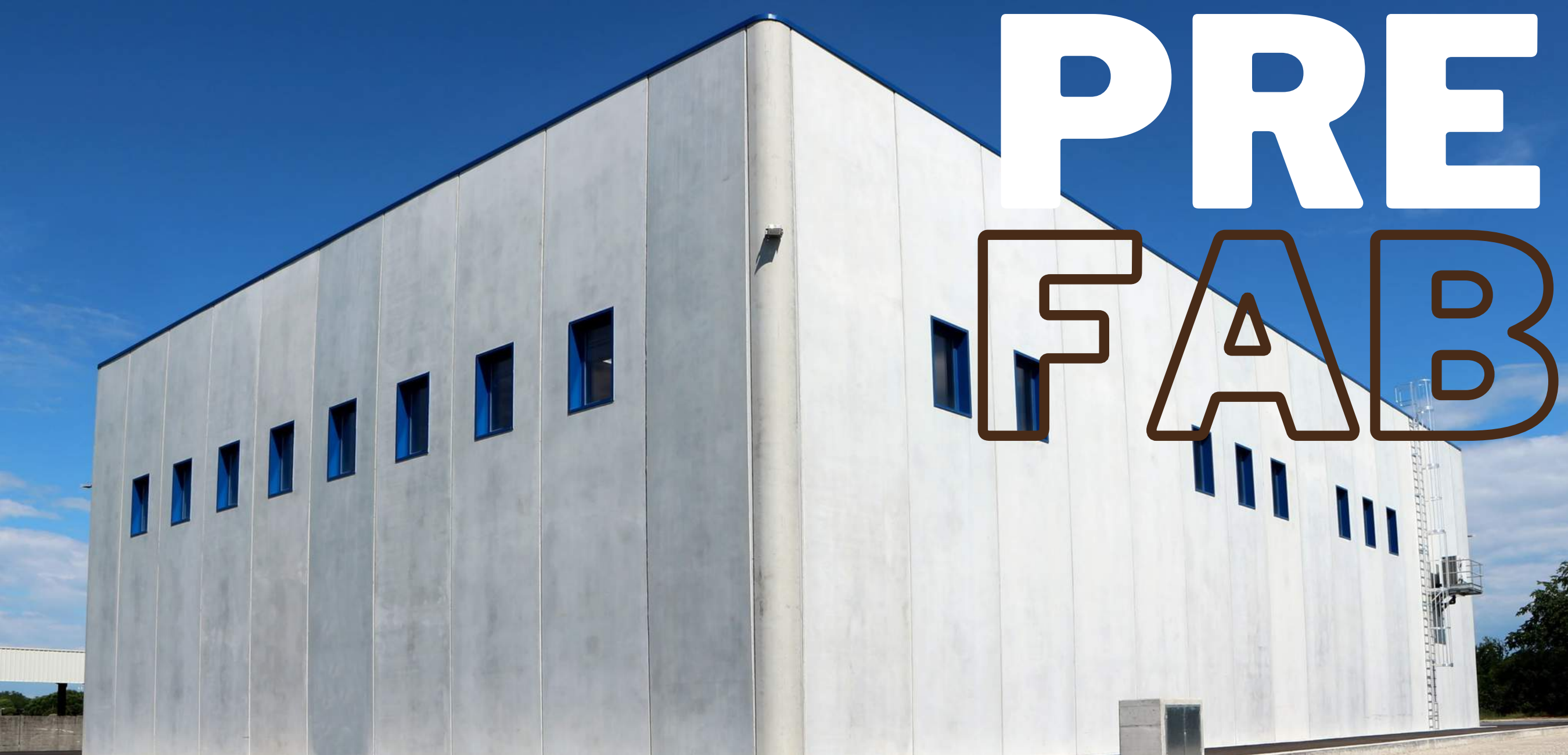
4'





C  
N  
C





**PRE**

**FAB**





# SEGMENTS

WAREHOUSES

CORPORATE OFFICES

INDUSTRIAL ACCOMODATIONS

EDUCATIONAL INSTITUTIONS

RESORT/VILLAS









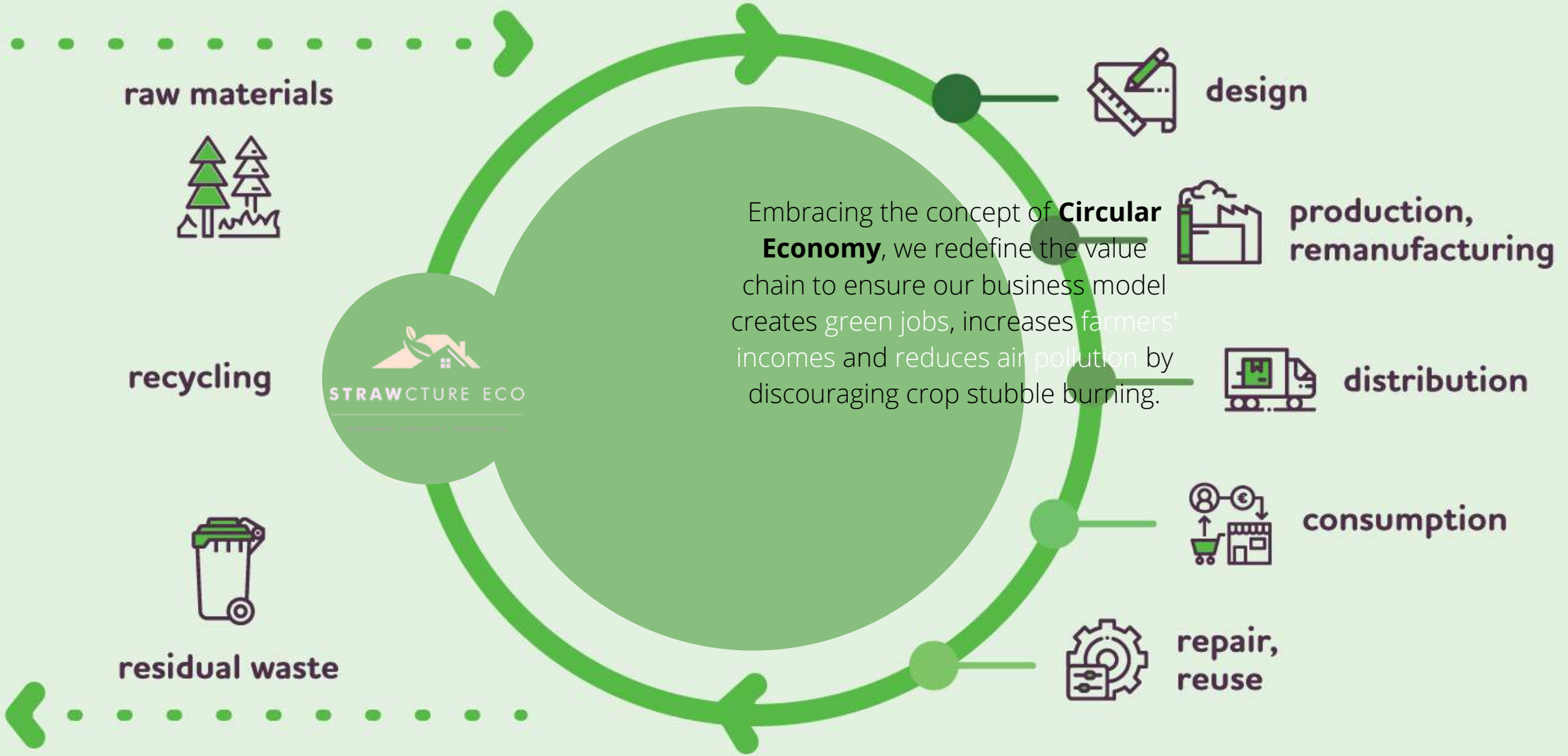


CHARACTERISTICS	STANDARD	BIOPANEL	HD	PREMIUM
Density	550-800 kg/m3	700 kg/m3	740 kg/m3	800 kg/m3
Internal Bond	0.5-1.5 N/mm2	0.5	0.75	1.0
Modulus of Elasticity	Not less than 2000 N/mm2	2300	2500	2800
Thickness Swelling (2hr)	Not more than 15%	10%	7%	5%
Screw Withdrawal (Face)	1200-2500 N	1900 N	2100 N	2433 N
Screw Withdrawal (Edge)	1200-1500 N	1250 N	1250 N	1300 N
Modulus of Rupture	15-30 N/mm2	20	22	25
Moisture Content	5-10%	5-10%	5-10%	5-10%
Weight (12mm)	kg/sft	0.80	0.81	0.92



CHARACTERISTICS	STANDARD	BIOPANEL	HD	PREMIUM
Density	550-800 kg/m3	700 kg/m3	740 kg/m3	800 kg/m3
Internal Bond	0.5-1.5 N/mm2	0.5	0.75	1.0
Modulus of Elasticity	Not less than 2000 N/mm2	2300	2500	2800
Thickness Swelling (2hr)	Not more than 15%	10%	7%	5%
Screw Withdrawal (Face)	1200-2500 N	1900 N	2100 N	2433 N
Screw Withdrawal (Edge)	1200-1500 N	1250 N	1250 N	1300 N
Modulus of Rupture	15-30 N/mm2	20	22	25
Moisture Content	5-10%	5-10%	5-10%	5-10%
Weight (12mm)	kg/sft	0.80	0.81	0.92





raw materials



design



production, remanufacturing



distribution



consumption



repair, reuse

recycling



residual waste



Embracing the concept of **Circular Economy**, we redefine the value chain to ensure our business model creates green jobs, increases farmers' incomes and reduces air pollution by discouraging crop stubble burning.

## OUR PARTNERS & SUPPORTERS



**eCHOING  
GREEN**



**ATAL INCUBATION CENTRE  
BANASTHALI VIDYAPITH**



**NSR  
CEL**



**STRAWCTURE ECO**

EMPOWERING SUSTAINABLE CONSTRUCTION

## CONTACT INFO

### Office Address

K1-117, First Floor, CR Park- New Delhi -110019

### Email Address

[strawcturegram@gmail.com](mailto:strawcturegram@gmail.com)

### Phone Number

+91 76077 76756